

THE NSA STETHOSCOOP

THE WEEKLY PITT NURSING STUDENT NEWSLETTER

Table of Contents

NCLEX QUESTION OF THE WEEK

Test your knowledge and try out our weekly NCLEX question!

UPCOMING EVENTS

Find out what NSA events are up and coming!

STUDENT SPOTLIGHT

NSA highlights a student each week, help us recognize them!

PET OF THE WEEK

Check out a member of Pitt NSA's super cute pets!

IMPORTANT LINKS

Find links to event attendance forms, interest forms, committees, and submissions for our next newsletter!

Pitt NSA has a website! Check it out HERE!

Explore our website to meet the board, reference old Stethoscopes and GBM slides, see what's next on our calendar, and find any important links!

General feedback form HERE!

Fill out this form to leave any comments or ideas about NSA so we can better serve you.

Financial feedback form HERE!

Fill out this form for any financial questions or concerns that we can help you with. This can be anonymous if you wish.

Academic feedback form HERE!!

Use this form to share ideas with our new academic chair! If you have any academic concerns, we can also help find you resources.



NCLEX Question of the Week

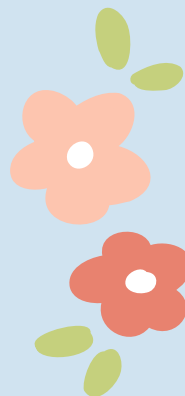
The nurse prepares to perform the initial assessment on a school-age client. The client has an open wound infected with methicillin-resistant *Staphylococcus aureus* (MRSA). Which precaution will the nurse take?

1. Wear gloves only.
2. Wear gown and gloves.
3. Wear gown, gloves, and mask.
4. No precautions are necessary.

Interested in leadership and
being more involved in NSA? Join
a committee through the links
below!

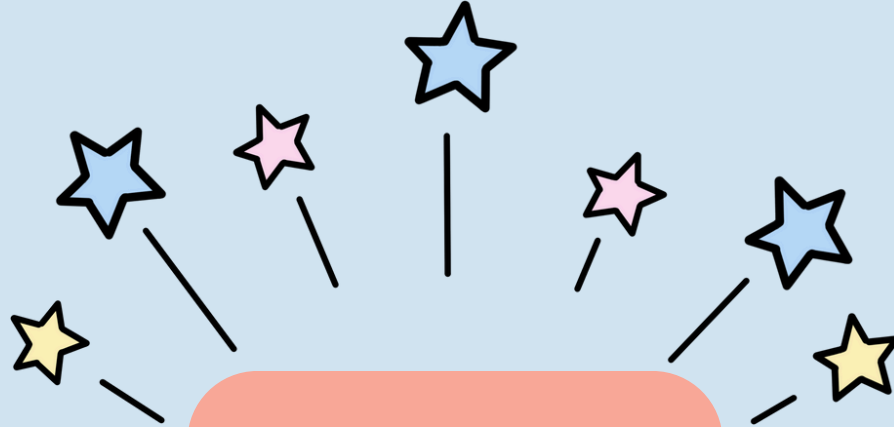
(10 points for joining)

[Social Committee](#)
[DEI Committee](#)
[Research Committee](#)
[Mental Health Committee](#)
[Formal Planning Committee](#)



Valentines for Veterans
Interest Form [HERE!](#)

Tuesday, February 10th
at 7pm in Vic 122



**Student Spotlight:
Eleanor Hostetler**

Eleanor is awesome! She brings a lot of positivity to the world and I appreciate her presence. She does a great job balancing her busy schedule and I am proud to call her my friend. She will be a great nurse!

For new members or those who paid last spring, it's time to pay dues!

Fill out this form before payment

\$15 cash or check (made out to the University of Pittsburgh)

Sarah, our business manager, will be on the first floor of Victoria to collect dues at this time:

Monday 2/2 6-7:30

Thursday 2/5 10-12

Before and after our GBMs

Fill out this interest form to attend our Valentine's self love night!

Craving some Panera? We have a fundraiser! Join us February 11th 8am-7pm to help support Pitt NSA

Use code FUND4U on the app or kiosk at

Meet us at the Panera on Forbes!
3800 Forbes Ave



Meme of the week

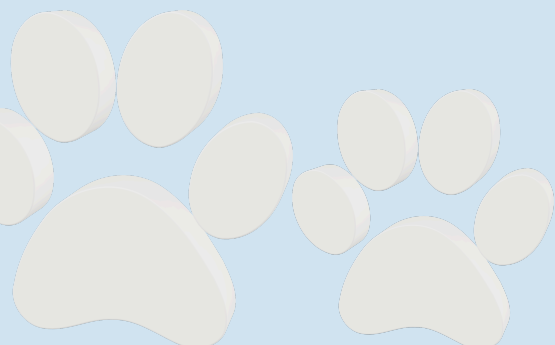
Submit a nursing meme to be featured in the newsletter for five points!

If you are interested in being a tutor or finding one, sign up HERE!
Tutors will get ten points!

Pet of the Week



Bruno!
Pitbull



NCLEX Answer:

2. Wear gown and gloves. (Correct Answer)

MRSA requires contact precautions. The nurse should wear clean, nonsterile gloves and gown when entering the client's room and when having any contact with the client or with surfaces that the client touches.

Important links and ways to contact us:

Website

Instagram: @pittnsa

Email: pittnsa@gmail.com

Fill out the form below to earn points for attending events or submitting something to the Stethoscoop!

Event Attendance Form



Hope you all have a great start to February!
With love, Pitt NSA

